

LARGE CAPACITY 5-AXIS PROTOTYPE CNC AEROSPACE FACILITY

Seattle, WA
Location

Including: CNC HAAS & Milltronics, Lathes, Inspection Equipment, Mills, Welders, Tooling and Support Equipment

TUESDAY
JUNE
19
10:00 AM PDT

FEATURED EQUIPMENT: HAAS VR-9 CNC 5-Axis, VF11B/40, TL-2, MiniMill, HAAS Rotary Tables & Milltronics VMD30-F, VMF16E New as 2005 • (150) CT40 Tool Holders • Toyota Electric Forklift 2,500 Lbs. Cap. Inspection Equipment Romer Infinite 5018 CMM Abrasive Blast Machines • Grinders and Sanders • Vibratory Deburrers and Much More



5-Axis

2009



120"-X

2005



2001

Haas VR-9 5-Axis CNC Vertical Machining Center

Haas VF-11B/40 4-Axis Vertical Machining Center

Milltronics VMD30-F Vertical Machining Center



2001



2007



2013



2007

Haas MiniMill Vertical Machining Center

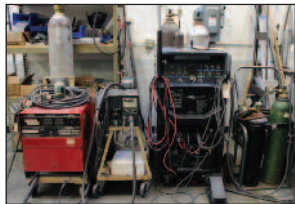
Haas TL-2 CNC Lathe

5' Romer Infinite 5018 Portable Arm CMM

20" x 80" Birmingham YCL-2080 Engine Lathe



Manual Work Shop



View of Welders



Cutting & Abrasive Station



Kurt Mill Vises



Toyota Forklift

5-AXIS CNC VERTICAL MACHINING CENTER

- Haas VR-9 CNC, 5-Axis, 84" x 40" x 30" Trvls., +/- 32 deg. A & B Axes, 10,000 RPM, CT40 Taper, 32 ATC, S/N 1056269, New 2009

VERTICAL MACHINING CENTERS

- Haas VF-11B/40, 4-Axis, 120" x 40" x 30" Trvls., 10,000 RPM, Geared, CT40 Taper, 24 ATC (Side Mount), S/N 44840, New 2005
- Milltronics VMD30-F, Centurion 6 Control, 70" x 30" x 24" Trvls., 10,000 RPM, CT40 Taper, 20 ATC, S/N 6987, New 2001
- Milltronics VM16E, Centurion 6 Control, 30" x 16" x 19.5" Trvls., CT40, 20 ATC, S/N 6161, New 2000
- Haas MiniMill, 16" x 12" x 10" Trvls., 6000 RPM, CT40 Taper, 10 ATC, S/N 24335, New 2001
- (2) HAAS HRT 310 & HRT 210 Rotary Tables

CNC LATHE

- Haas TL-2 CNC, 16" Max. Turning Dia. x 48" Centers, 3" Spindle Bore, 10" 3 Jaw Chuck, S/N 3076632, New 2007

INSPECTION

- 5' Romer Infinite 5018 Portable Arm CMM, Cimcore Win RDS s/w, New 2013
- API LTS1100 Laser Tracker II Plus, New 2005
- TESA TESA-hite 600 Digital Height Gauge
- Granite Surface Plates • Assorted Pin Gage Sets, Calipers & Thread Gages

CONVENTIONAL TOOL ROOM & FAB MACHINERY

- 20" x 80" Birmingham YCL-2080 Engine Lathe, New 2007 • Bridgeport Series I Vertical Mill • Piranha P-50 Iron Worker • Jet Benchtop Lathe • Miller Syncrowave 250DX MIG Welder & Several Other Welders • Vertical & Horizontal Band Saws • Servo Drill, Drill Presses, Abrasive Blast Machines • Grinders, Sanders, Vibratory Deburrer • Nugier H20-6 H Frame Hyd. Press • Rolling Gantry Crane, w/2-Ton Electric Hoist • Toyota Electric Forklift 2,500 Lbs. Cap. • Approx. (150) CT40 Tool Holders • Lista 10 Drawer Cabinet • (9) 6" Kurt Vises • 8" Kurt Vise • (3) Misc. Vises • (2) Flammable Cabinets • Miscellaneous Tool & Shop Carts • Work Benches • Shelves • (4) Sections Pallet Racking • (2) Sets of Rolling Scaffolding • Rolling Stairs • Ladders • Approx. (5) Shop Fans • Engine Hoist, etc.

ONSITE INSPECTION: Monday, June 18 from 9:00am to 4:00pm PDT

AUCTION DATE: Tuesday, June 19 at 10:00am PDT • **LOCATION:** 8714 S. 222nd Street, Kent, WA 98031

**Seattle
Washington
Location**

LARGE CAPACITY 5-AXIS PROTOTYPE CNC AEROSPACE FACILITY

Including: CNC HAAS & Milltronics, Lathes, Inspection Equipment,
Mills, Welders, Tooling and Support Equipment

TUESDAY

JUNE

19

10:00 AM PDT



5-Axis

2009

Haas VR-9 5-Axis CNC Vertical Machining Center



15910 Ventura Blvd, Suite 1410
Encino, CA 91436



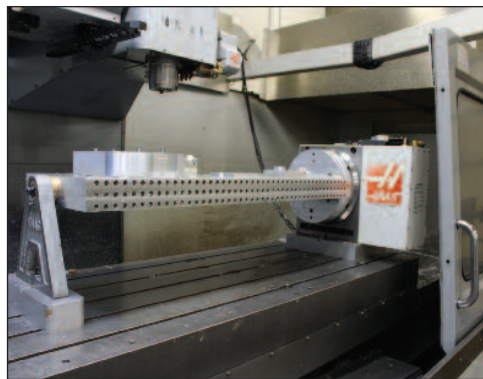
Auctioneer, Gary Treisman
WA License #3075



120"-X

2005

Haas VF-11B/40 4-Axis VMC



HAAS HRT 310 Rotary Table



2001

Milltronics VMD30-F VMC



2001

Haas MiniMill VMC



2007

Haas TL-2 CNC Lathe

TERMS: An 18% Buyer's Premium will be charged on the sale of all assets. The Buyer's Premium will be reduced to 16% for all onsite buyers if payment, in full, is made by means of cash, wire, cashier's check, company check (with bank letter of guarantee) within 48 hours of the close of the sale. An 18% Buyer's Premium will be charged for all BidSpotter purchases with no discount for prompt payment.

LAST DATE TO REMOVE EQUIPMENT:
Friday, June 29th

ONLINE BIDDING AVAILABLE: **BidSpotter.com**

